

MODULE PARENTS AND SCHOOL BOARD

ACTIVITY 4 . WEB CONTENT ACCESSIBILITY GUIDELINES

- **TIME:** 30m.
- **RESOURCES:** Infographic – list of recommendations.
- **LANGUAGES:** ENG / SPA.

DESCRIPTION:

The Web Content Accessibility Guidelines (WCAG), developed by the World Wide Web Consortium (W3C), are a set of guidelines designed to ensure that web content is accessible to all individuals, including those with disabilities. These guidelines are divided into four fundamental principles: Perceivable, Operable, Understandable, and Robust. The WCAG are structured into three levels of conformance: A (the minimum level), AA (the recommended level for most web content), and AAA (the highest level of accessibility).

OBJECTIVES:

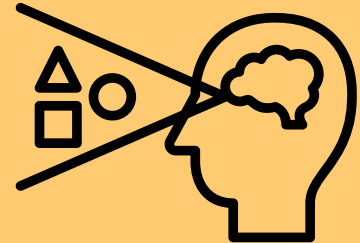
The goals of the WCAG are to ensure online accessibility for all individuals, enhance user experience, and promote digital inclusion, while also providing clear standards and legal compliance in the development and design of web content.

LESSON OVERVIEW:

Complying with these guidelines not only enhances accessibility for people with disabilities but can also improve the user experience for all users.

Principle: Perceivable

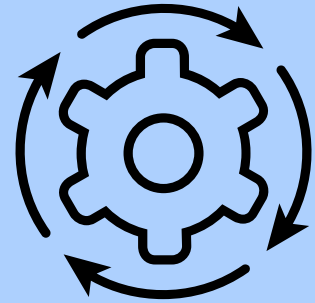
Information and user interface components must be presentable to users in ways they can perceive.



- **Text Alternatives:** Provide text alternatives for any non-text content so that it can be changed into other forms people need, such as large print, braille, speech, symbols or simpler language.
- **Time-based Media:** Provide alternatives for time-based media.
- **Adaptable:** Create content that can be presented in different ways (for example simpler layout) without losing information or structure.
- **Distinguishable:** Make it easier for users to see and hear content including separating foreground from background.

Principio 2: Operable

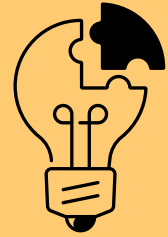
User interface components and navigation must be operable.



- **Keyboard Accessible:** Make all functionality available from a keyboard.
- **Enough Time:** Provide users enough time to read and use content.
- **Seizures:** Do not design content in a way that is known to cause seizures.
- **Navigable:** Provide ways to help users navigate, find content, and determine where they are.

Principle 3: Understandable

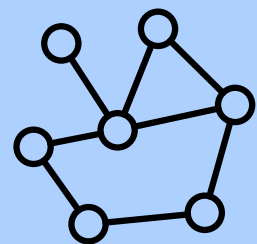
Information and the operation of user interface must be understandable.



- **Readable:** Make text content readable and understandable.
- **Predictable:** Make Web pages appear and operate in predictable ways.
- **Input Assistance:** Help users avoid and correct mistakes.

Principle 4: Robust

Content must be robust enough that it can be interpreted reliably by a wide variety of user agents, including assistive technologies.



- **Compatible:** Maximize compatibility with current and future user agents, including assistive technologies.